

Village Outreach Programme

In 2015

413 Adults with HIV/AIDS currently in programme

75 Newly admitted adults with HIV/AIDS in 2015

28 Children infected with HIV – 2 new cases 2015

The Village Outreach Programme, under the direction of Sr Pranee Sitti, is multi faceted. Working with 17 district and provincial hospitals, social welfare departments and village clinics, the Outreach Team divides its work into the following areas:

- **Village visitation** – home nursing care/ milk programme for children under two/ aged care/ nutritional supplements for special needs children/ assessment/referrals/ housing
- **Hospital liaison** – transportation to hospital appointments/ advocacy with medical professionals/ visitation/ providing overnight carers
- **Education** – seminars/workshops/camps in our centre and in village venues
- **Family days** - Community building and celebration at our Friendship Centre
- **Hands of Hope** - income-generating project for those *living* with HIV/AIDS. Hand made cards, mobiles, decorations and gifts www.handsofhopenongkhai.com
- **Garden of Friendship** – residential programme and Care Facility for PLWHA primarily. Holistic approach to care.

Garden of Friendship

Care Centre

The Garden of Friendship has grown in stages since 2008 in response to the needs of the rural target group. From the beginnings, the aspect of ‘community’ has remained a priority and is represented by our friendship fountain in front of the Garden’s central building.





Left: The original Care Facility with five patient rooms (11 beds) now used for critical care cases requiring more medical supervision Right: The new facility for mobile patients who still require assistance with administration of drugs, physio therapy and personal health care, are accommodated in two dormitories.



Family homes for long term residency

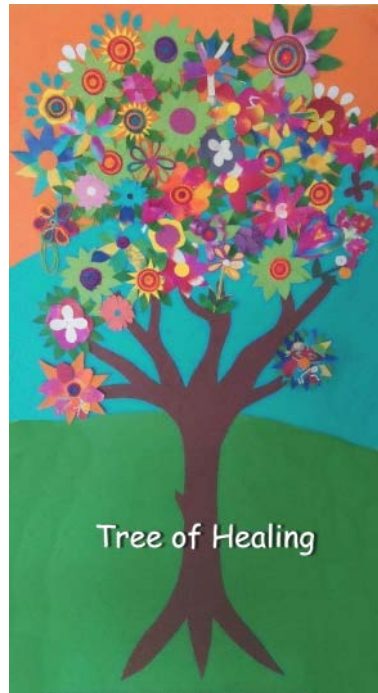


Sr Mary's Assisted Living Cottage

The day starts with meditation for staff and patients in the Care Facility



Morning activities include art and music therapy/ games/ group counseling



Our Care Facility staff, including our international volunteers, provide 24 hour care to patients. Residents from the Garden, assist with serving meals, cleaning and patient care when necessary.



Exercise is part of the daily regime – both for individuals and as a group



Those more able bodied, are able to participate in agricultural activities which contribute to the food resources of the community.



Left: Three nutritious meals are served daily and patients will help the staff to assist others to eat, who are unable to help themselves





Transportation to hospital is provided and carers arranged for those admitted to hospital without family support.

Health education is provided to those in residence



Palliative care, prayers for the dying and arrangement of funerals



New Facilityopened 7th June 2016

We are grateful to private donors and to the people of Japan, who through the Japanese Embassy in Bangkok, provided the funds for the new centre.



Meeting room for staff, health workers, patients and outreach target population education



Large area for patients' meals and activities



Nurse's station

Women's dormitory



Our Lady's Garden



Ready to welcome all

